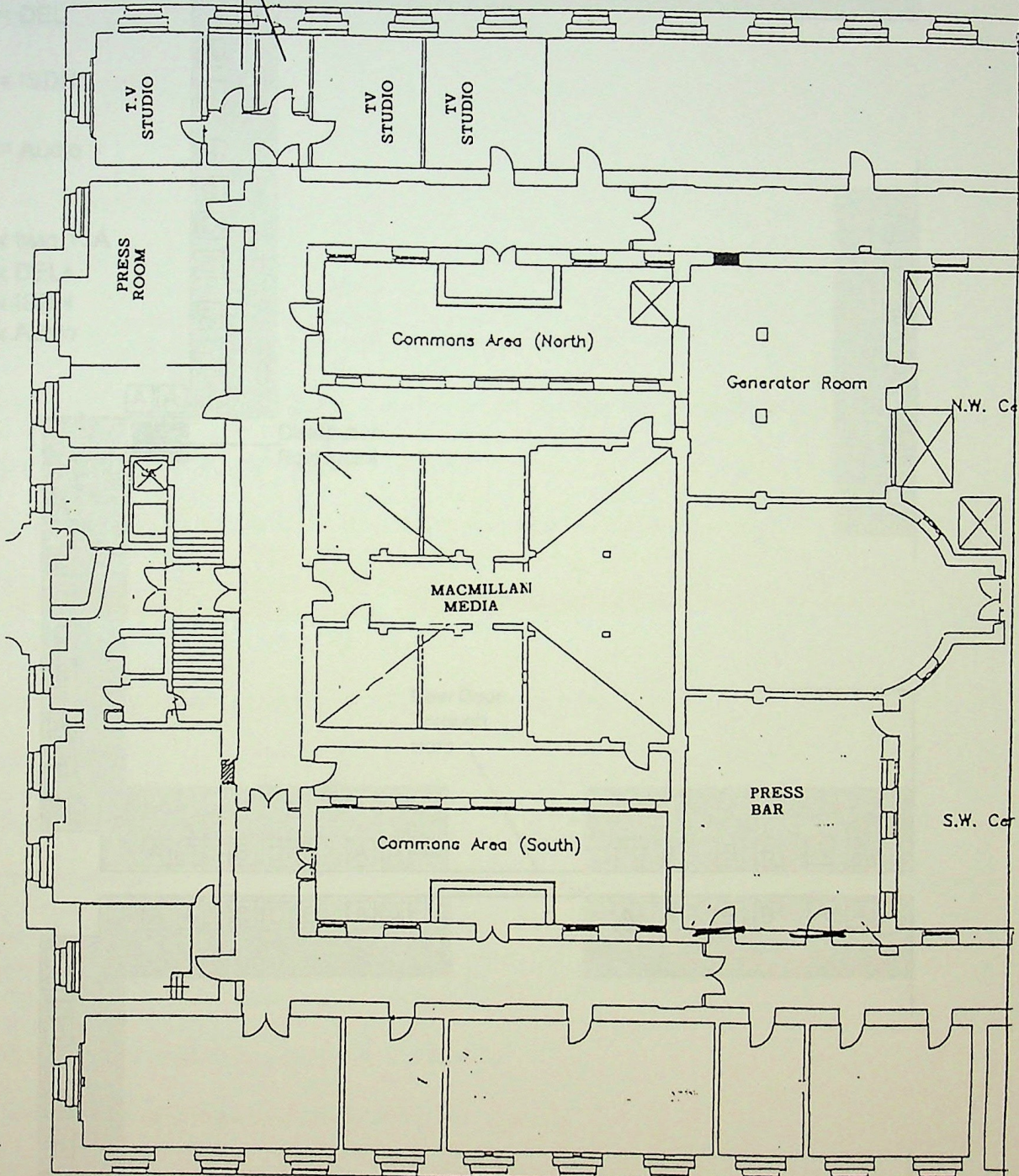


RADIO  
STUDIOS



T.V.  
STUDIO

TV  
STUDIO

TV  
STUDIO

PRESS  
ROOM

Commons Area (North)

Generator Room

N.W. Co

MACMILLAN  
MEDIA

Commons Area (South)

PRESS  
BAR

S.W. Co

# Press Rooms (B38/39)

**A** = Twin 13A

**B** = DEL

**C** = ISDN

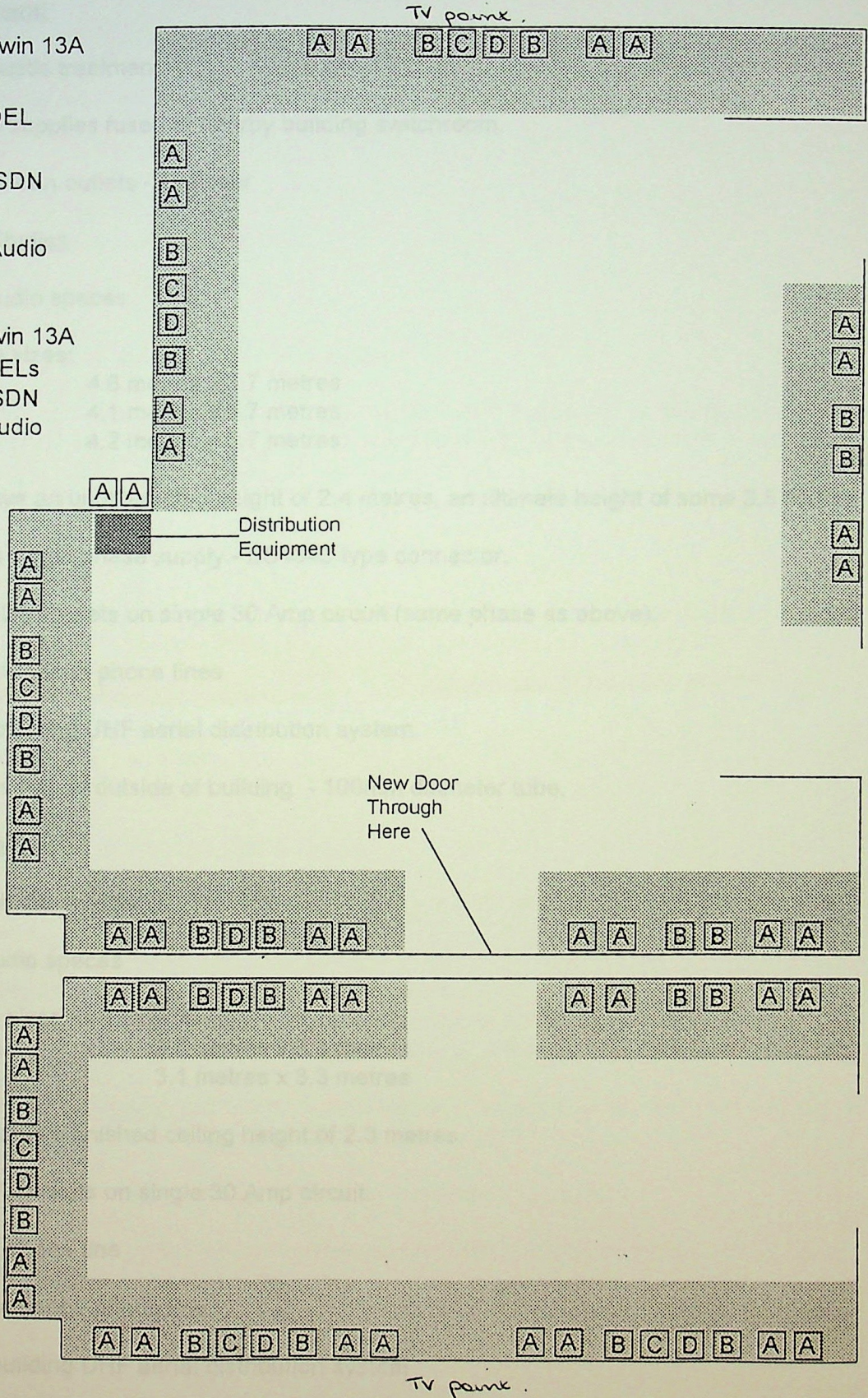
**D** = Audio

46 x twin 13A

22 x DELs

6 x ISDN

8 x Audio



# Assembly Broadcasting

## Proposed Media Facilities

### Studios General

Surface acoustic treatment.

All electrical supplies fused at nearby building switchroom.

Sound and vision outlets - see over

### Television Studios

Three TV studio spaces

Approximate sizes:

TV 1	4.6 metres x 5.7 metres
TV 2	4.1 metres x 5.7 metres
TV 3	4.2 metres x 5.7 metres

All have an unobstructed height of 2.4 metres, an ultimate height of some 3.5 metres

One 32 Amp single phase supply - BS4343 type connector.

Three twin 13A sockets on single 30 Amp circuit (same phase as above).

Two direct exchange phone lines

Outlet from building UHF aerial distribution system

Cable access trap to outside of building - 100mm diameter tube.

### Radio Studios

Two Radio studio spaces

Three TV studio spaces

Approximate sizes:

Radio 1	3.0 metres x 3.3 metres
Radio 2	3.1 metres x 3.3 metres

Both have a finished ceiling height of 2.3 metres

Two twin 13A sockets on single 30 Amp circuit.

One ISDN2e phone line

One direct exchange phone line

Outlet from building UHF aerial distribution system

No external cable access.

# Assembly Broadcasting

## Proposed Media Facilities

### Press Rooms

One TV set in each room - vision and sound. Each set will be connected to one of circuits described below, and will also be able to receive those off-air signals present on the building UHF distribution system

Forty-four user twin 13A sockets

Twenty-two direct exchange phone lines

Six ISDN2e phone lines

Eight sound feed distribution points - see below

Spare feeds of some of the sound and vision signals will be available at the distribution equipment. Note that this is located adjacent to an opening window on the West wall of the building

### Press Bar Area

Two TV sets - vision and sound. Each set will be connected to one of circuits described below, and will also be able to receive those off-air signals present on the building UHF distribution system

Two direct exchange line telephones

### Studio & Press Area Sound and Vision Details

There will be two signals distributed throughout the media areas. The "Media 1" and "Media 2" circuits will each carry one of the following

- Assembly Chamber coverage (sound and vision)

- First Committee Room (Senate Chamber) coverage (sound and vision)

- Second Committee Room coverage (sound only plus black)

Note that the married sound and vision signals will only be made available in the Studios. The Press Room will have sound only at the distribution points.

It may be possible to make other signal sources available on request.

Composite 625 line PAL video will be terminated on a BNC connector, balanced line level mono audio on a male 3 pin XLR connector.